



## **SOUTH AFRICAN CLIMATE ADAPTATION AWARD & SUPPORT PROGRAMME**

### **INDALOGROW PROGRAMME:**

**Is your enterprise innovative, locally driven and eco-inclusive?**



**Apply to participate in the South African Climate Adaptation Indalogrow Awards and Support Programme!**

Indalo Inclusive South Africa will be implementing the South African Climate Adaptation Indalogrow Programme which aims to support Enterprises in climate adaptation which offer solutions or innovations that help local communities deal with consequences of climate change and strengthen the resilience of the economy. The call is open to all enterprises contributing to climate adaptation in various sectors such as Water, Biodiversity, Sustainable Tourism and Sustainable Agriculture. The programme is implemented with the support from the Government of Flanders.



**Water**



**Biodiversity**



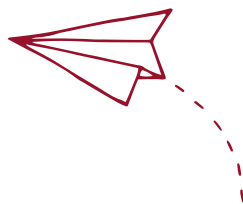
**Sustainable Tourism**



**Agriculture**

### **When?**

**Workshop 1  
19-20 October 2022**



### **Where?**

**Pretoria (Venue TBC)**

**CLOSING DATE FOR APPLICATIONS: 05 OCTOBER 2022**

# Eligibility Criteria?

**To apply for the South African Climate Adaptation Indalogrow Awards and Support Programme, you need to comply with the following:**

- South African Resident based in or doing work in rural communities and townships
- Women and youth are encouraged to apply
- Have an innovative solution within the water, biodiversity, sustainable tourism, and sustainable agriculture sectors
- Be operational for a minimum of at least 2 years
- Not currently part of more than two incubation programmes in South Africa
- The applicant should show a willingness to learn, grow and commit to the full duration of the programme
- The applicant must be directly involved in the enterprise operations
- The enterprise should have high potential to contribute to the green economy
- The enterprise should positively contribute to climate change adaptation
- Delivers social, environmental and economic benefits
- Has potential for scale up and become replicable
- Has intention and potential to become financially sustainable
- Annual turnover of R200 000- R500 000

**Complete the application form before or on 5th October 2022**

# How to Apply?

Register and Apply online through:

**APPLY**



<https://indaloelearning.org.za/>

8

Successful Enterprises will receive



R85 000 Grant Funding



Capacity Building consisting of 4 X workshops (2 in person and 2 online)

First Workshop: 19-20 October 2022, Pretoria - Venue to be confirmed (Other workshop dates to be communicated)



6 months Mentorship (virtual and contact sessions mentorship)

## Climate Change Adaptation Enterprises

Enterprises in Climate Adaptation offer solutions and innovations that help local communities deal with consequences of climate change and strengthen the resilience of the economy.

## CONTACT US

[info@indaloinclusive.org.za](mailto:info@indaloinclusive.org.za)

[www.indaloinclusive.org.za](http://www.indaloinclusive.org.za)

012 844 0135



Turning eco-inclusive enterprise ideas into  
**POSITIVE economic impact**